

**Headquarters Laboratory**  
P.O. Box 670  
Collinsville, MS 39325  
Office: (601) 626-1100  
Fax: (601) 626-1122



**Florida Laboratory**  
201 Douglas Avenue, Suite A  
Dunedin, FL 34698  
Office: (727) 253-4991  
Fax (727) 953-7849

## **Ron Smith & Associates, Inc.**

### **Testing Division**

Toll Free: 1-866-832-6772 | [www.RonSmithandAssociates.com](http://www.RonSmithandAssociates.com)  
Email: [testing@ronsmithandassociates.com](mailto:testing@ronsmithandassociates.com)

---

## **Summary Report**

### **Spring 2017 Tenprint Comparison Proficiency Test #17201**

**Issued: March 6, 2017**

On March 6, 2017, Ron Smith and Associates, Inc. (RS&A) shipped the 2017 Spring Tenprint Proficiency Test #17201. Participants were required to submit their responses no later than May 8, 2017, in order for them to be included in this summary report.

A total of 4 tests were ordered and shipped, with 3 participants returning their responses. The test was provided in both digital and hard copy format and included twenty pattern recognition prints, three sets of known fingerprints for comparison as a "pre-sentencing pack", three single-inked latent prints on checks for comparison to known fingerprint cards, and five side-by-side "AFIS" comparisons.

The results presented in this report reflect whether or not the participants' submitted results agree or disagree with the assigned values, garnered from pre-distribution testing and outlined in *The Manufacturer's Report* (Appendix 1). The primary purpose of a Summary Report is to provide an overall documentation of all the submitted responses. It is RS&A's intention to go a step further and provide more meaningful statistical results by analyzing the submitted responses in relationship to the demographics obtained from each of the examiners participating in this proficiency test. All results and statistics for Test #17201 will be outlined through graphs and charts found in the remainder of this report.

The legitimacy of the expected responses for the Spring Tenprint Proficiency Test #17201 was confirmed through the internal and external vetting of the test and the results.

RS&A strives to maintain the confidentiality of all of its clients and participants. All results are obtained and published using randomly generated test codes. RS&A will not release the identity of any participant without the written consent of the participant and/or the agency involved.

For any additional information, please contact the Tenprint Proficiency Test Coordinator at [testing@ronsmithandassociates.com](mailto:testing@ronsmithandassociates.com) or call toll free at 1-866-832-6772.

# Appendix 1

## Test Manufacturer's Information

### Spring 2017 Tenprint Proficiency Test #17201

This test consisted of four parts: pattern recognition, comparison of multiple tenprint cards, comparison of single inked fingerprints to tenprint cards, and side-by-side comparisons of unknown to known fingerprints. The assigned values for each part of the test are as follows:

#### Part 1: Pattern Recognition

<b>Image #</b>	<b>Pattern Type</b>
1	Right Slant Loop
2	Arch
3	Right Slant Loop
4	Whorl
5	Left Slant Loop
6	Arch
7	Right Slant Loop
8	Right Slant Loop
9	Arch
10	Whorl
11	Arch
12	Left Slant Loop
13	Left Slant Loop
14	Whorl
15	Arch
16	Whorl
17	Left Slant Loop
18	Arch
19	Whorl
20	Left Slant Loop

## Part 2: Pre-Sentencing Packet

The following are the fingerprints of the same person:

**“Known Fingerprints of ‘Josef Antonia’” and “Known Fingerprints of ‘Franz Casimir’”**

## Part 3: Fraudulent Checks

What can you conclude about the fingerprint on Check #1?

**The fingerprint found on Check #1 is the fingerprint of “David Patrick”.**

What can you conclude about the fingerprint on Check #2?

**The fingerprint found on Check #2 is the fingerprint of “David Patrick”.**

What can you conclude about the fingerprint on Check #3?

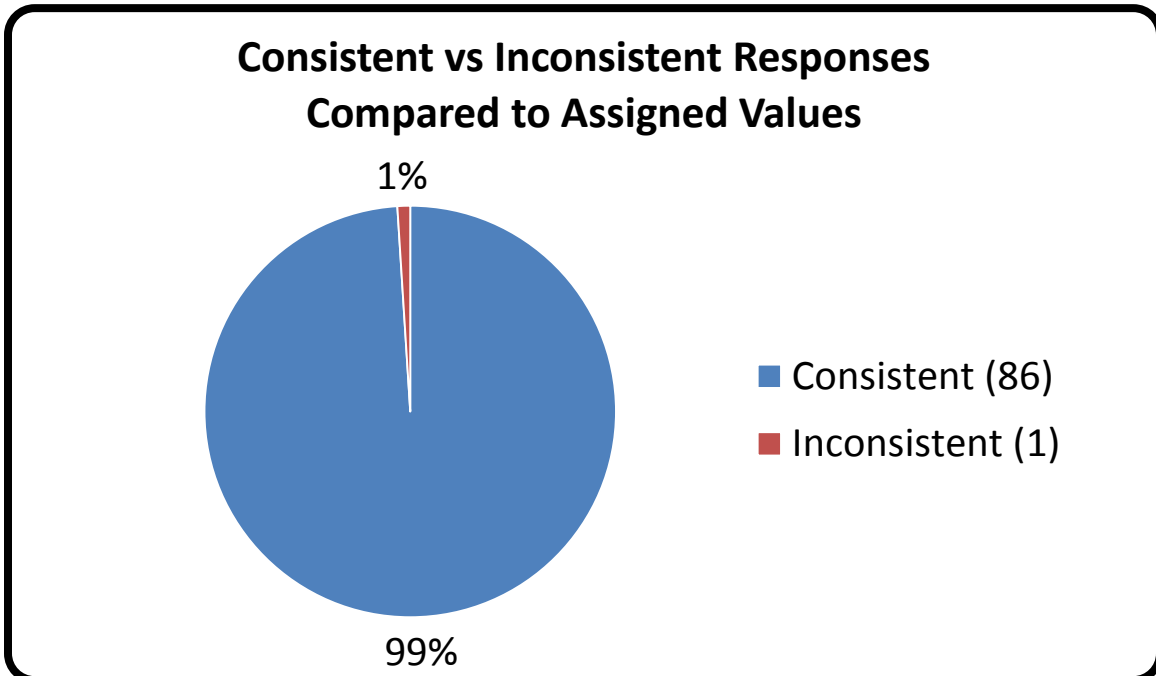
**The fingerprint found on Check #3 is the fingerprint of “David Patrick”.**

## Part 4: AFIS Side-by-Side Comparisons

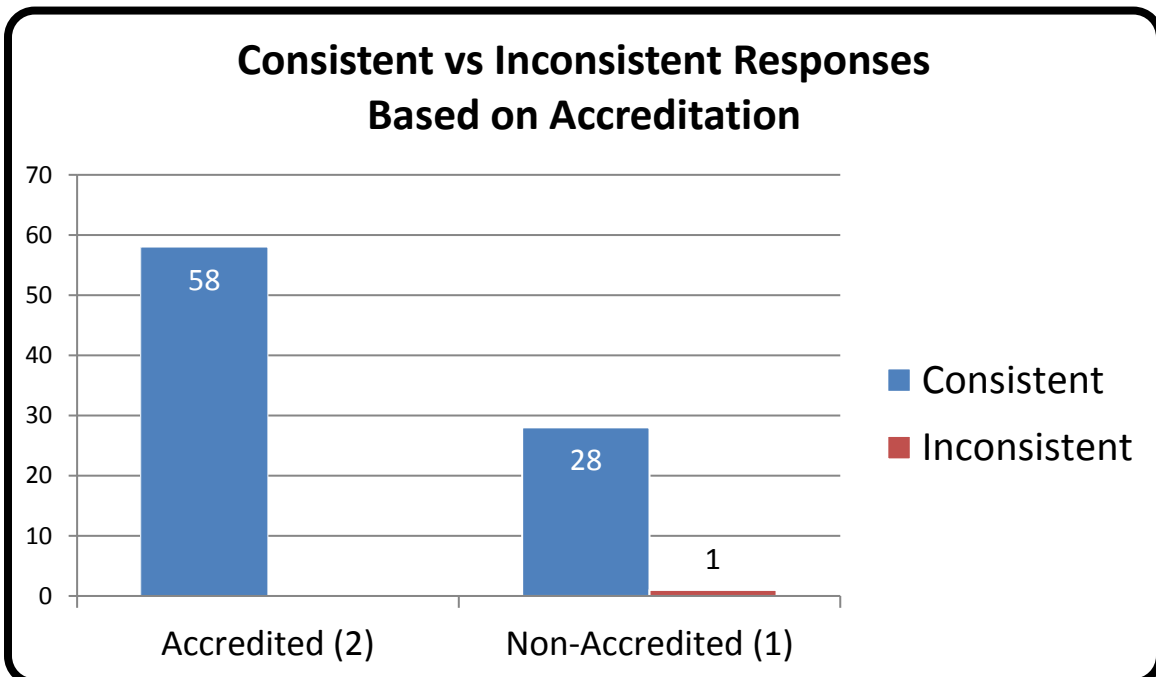
Comparison #	Conclusion
1	Exclusion
2	Identification
3	Identification
4	Exclusion
5	Exclusion

The test was provided in hard copy photograph and/or digital image formats. The assigned values were determined through the ground truth information and verified through unanimous agreement during pre-distribution testing.

## Appendix 2

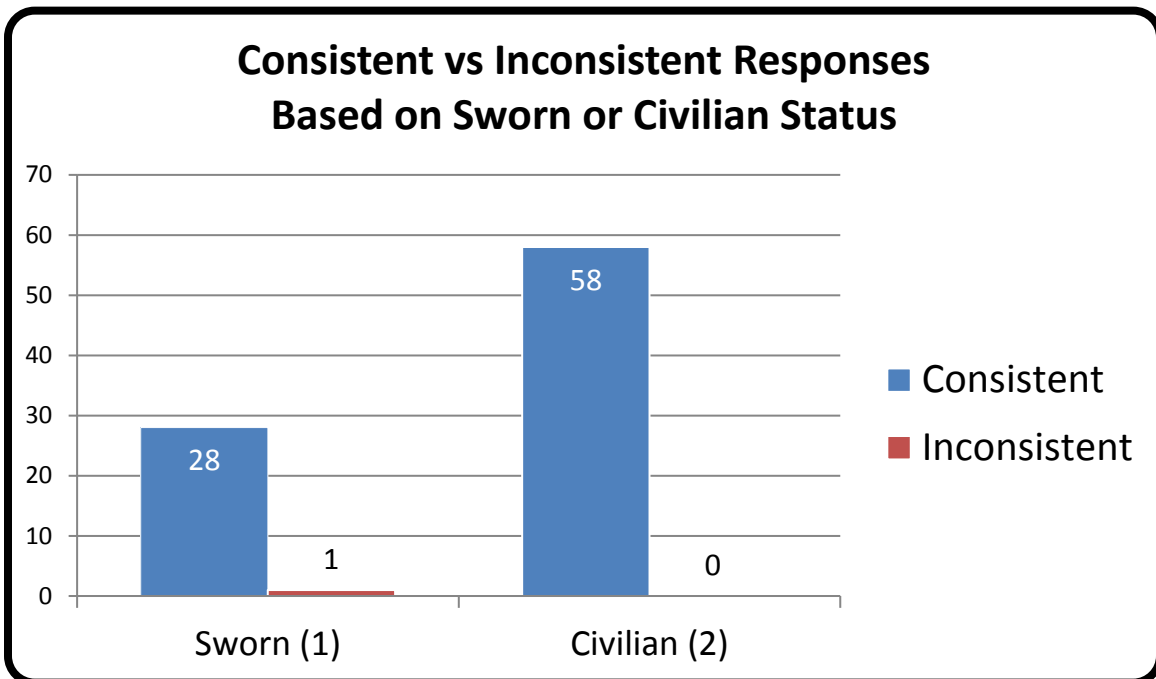


## Appendix 3

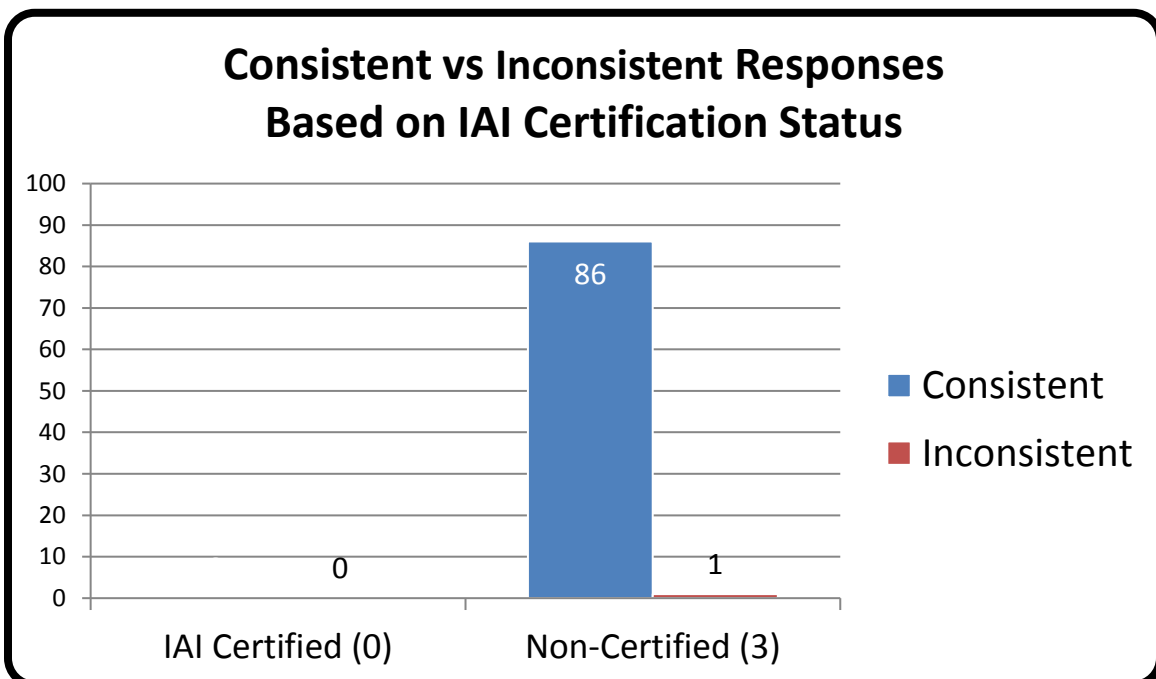


\*For further information, please read *Manufacturer's Additional Observations* on the final page of this report.

## Appendix 4



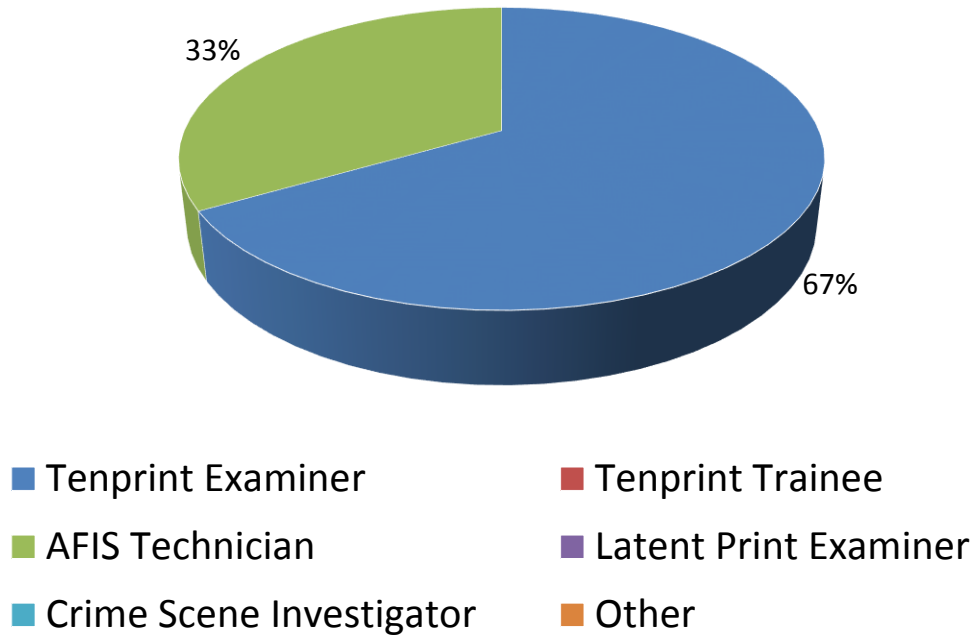
## Appendix 5



\*For further information, please read **Manufacturer's Additional Observations** on the final page of this report.

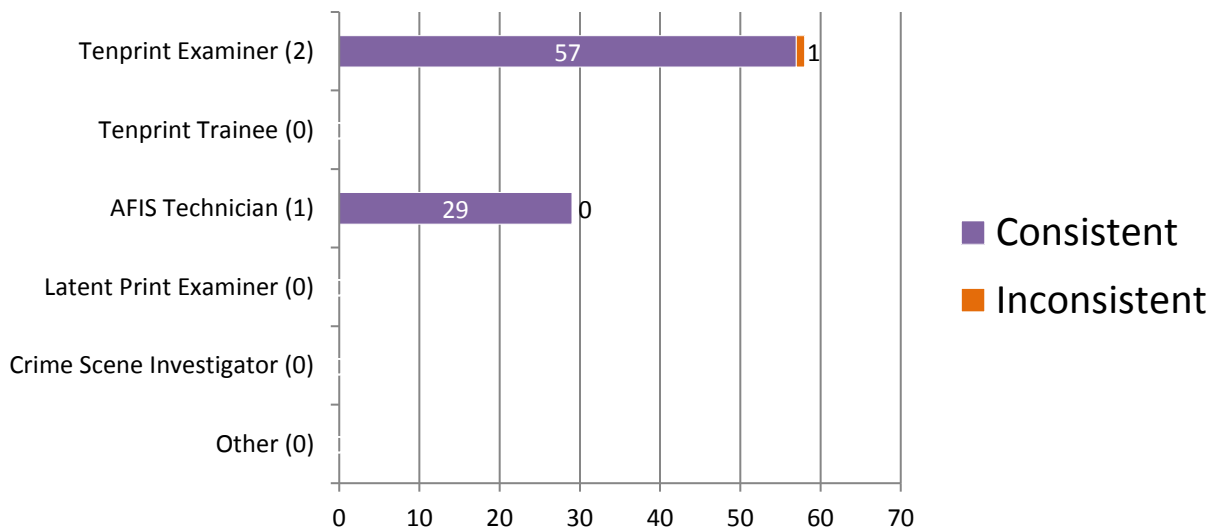
## Appendix 6

### Percentage of Participants Based on Primary Job Position



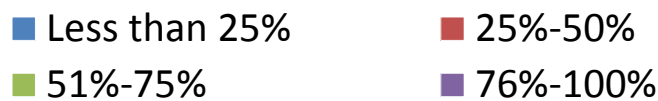
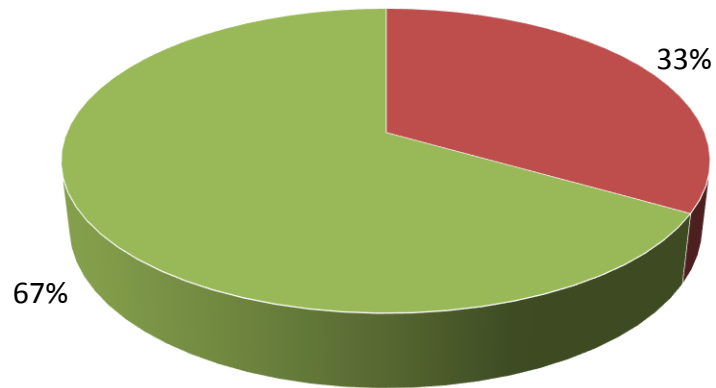
\*For further information, please read *Manufacturer's Additional Observations* on the final page of this report.

### Consistent vs Inconsistent Responses Based on Primary Job Position

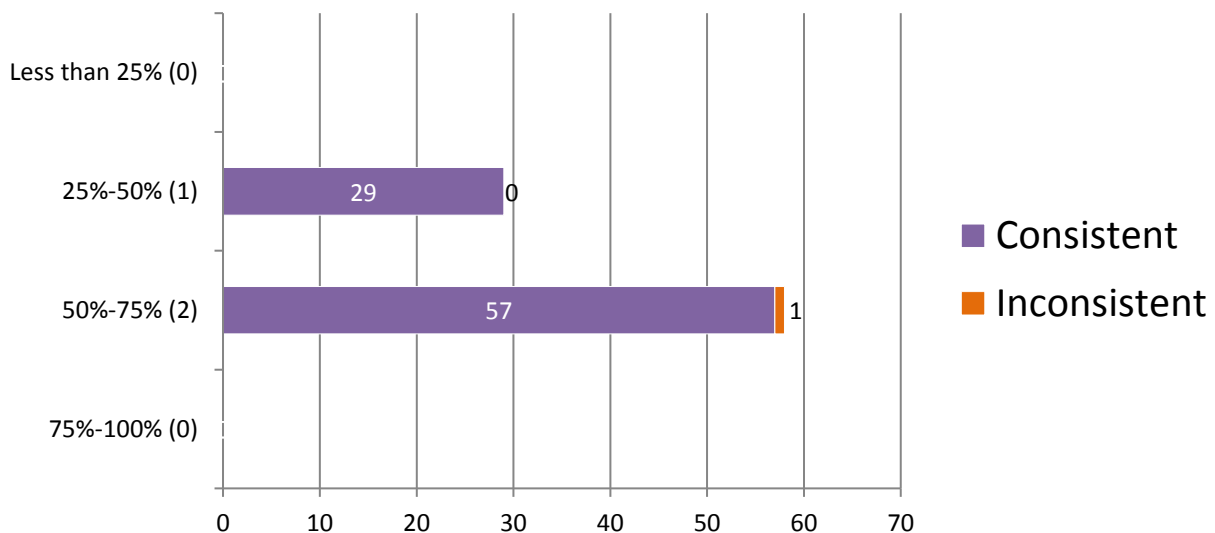


## Appendix 7

### Percentage of Participants Based on Time Devoted to Tenprint Casework



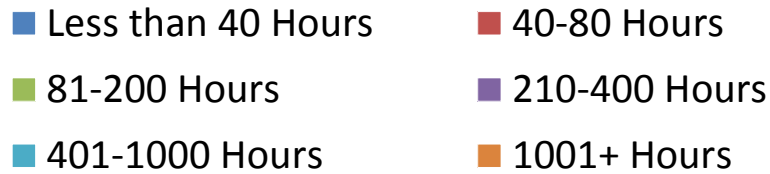
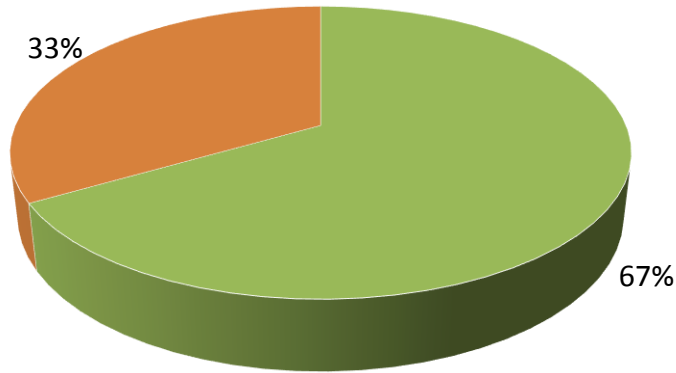
### Consistent vs Inconsistent Responses Based on Time Devoted to Tenprint Casework



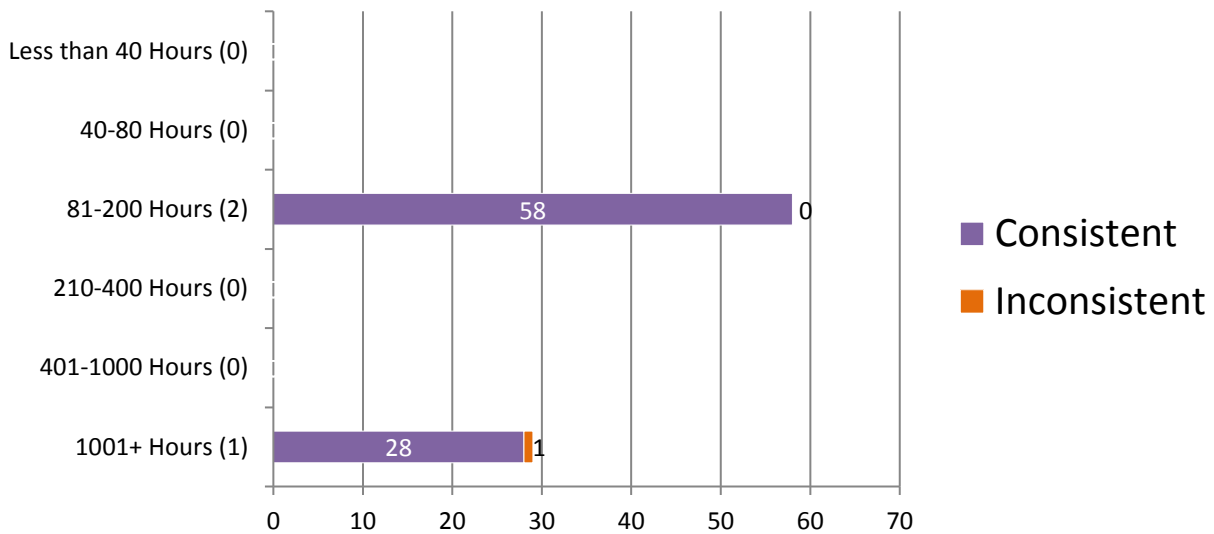
\*For further information, please read *Manufacturer's Additional Observations* on the final page of this report.

## Appendix 8

### Percentage of Participants Based on Hours of Tenprint Training Completed



### Consistent vs Inconsistent Responses Based on Hours of Tenprint Training Completed

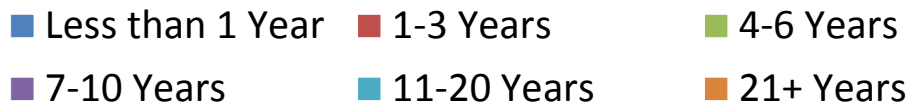
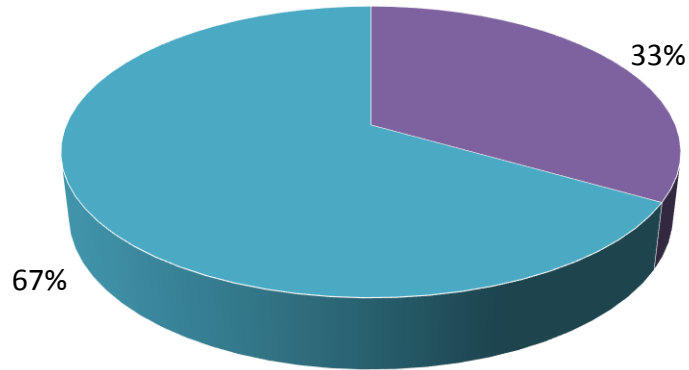


\*For further information, please read **Manufacturer's Additional Observations** on the final page of this report.

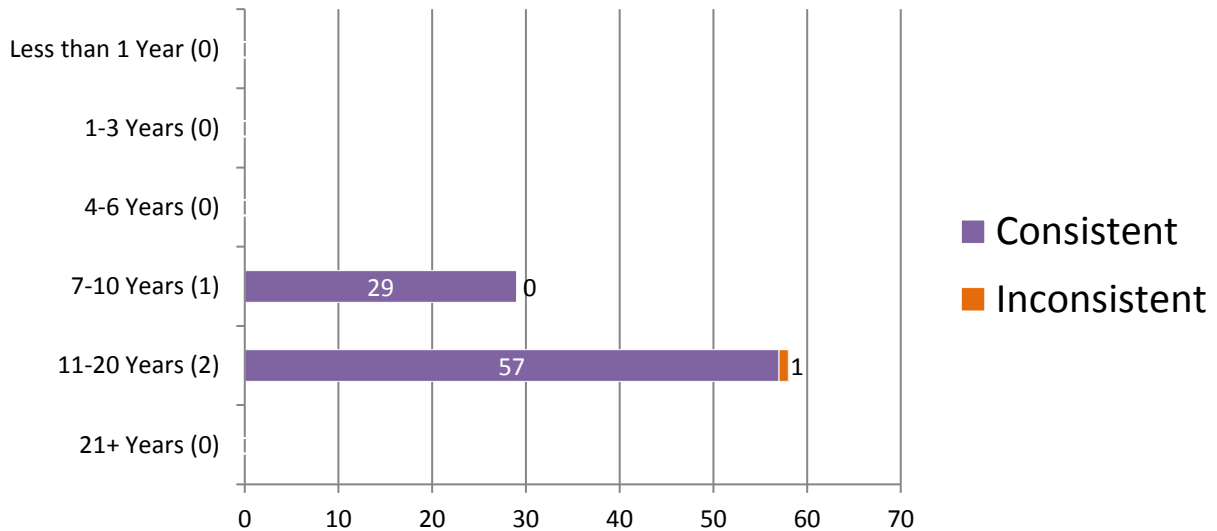


## Appendix 9

### Percentage of Participants Based on Years of Experience in Tenprints



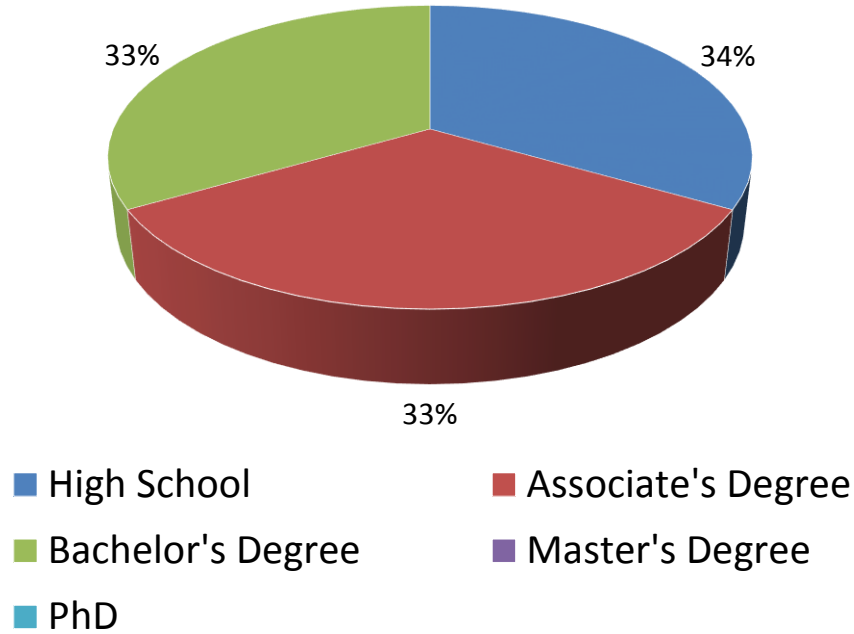
### Consistent vs Inconsistent Responses Based on Years of Experience in Tenprints



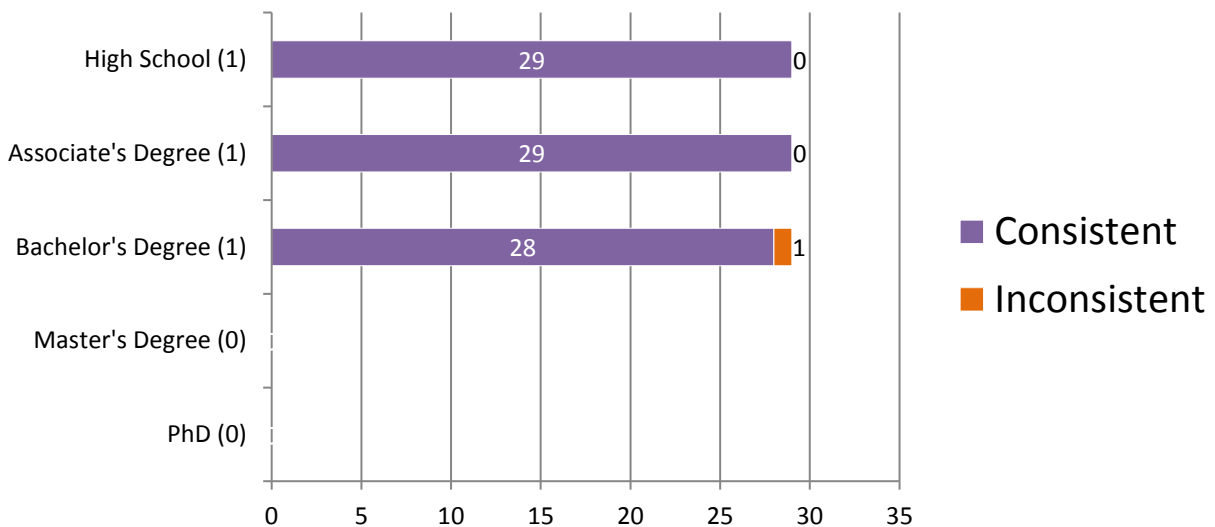
\*For further information, please read *Manufacturer's Additional Observations* on the final page of this report.

## Appendix 10

### Percentage of Participants Based on Highest Level of Education Completed

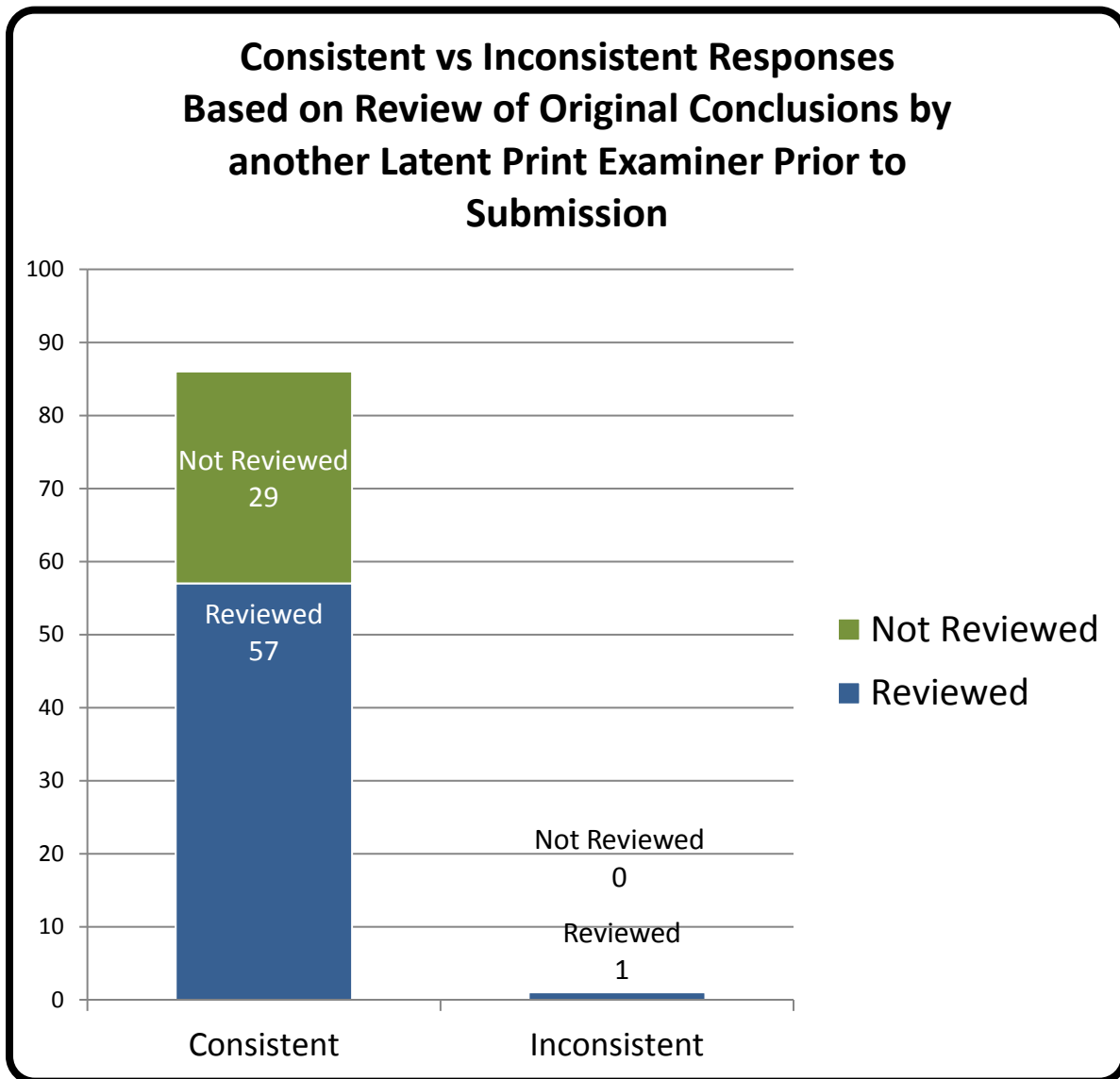


### Consistent vs Inconsistent Responses Based on Highest Level of Education Completed



\*For further information, please read *Manufacturer's Additional Observations* on the final page of this report.

## Appendix 11



\*For further information, please read **Manufacturer's Additional Observations** on the final page of this report.

## Appendix 12

### Participant Responses listed by Test Code

Part 1																				
	1	2	3	4	5	6	7	8	9	10	11	12	13	14	15	16	17	18	19	20

	1	2	3	4	5	6	7	8	9	10	11	12	13	14	15	16	17	18	19	20
<i>Assigned Values</i>	RSL	A	RSL	W	LSL	A	RSL	RSL	A	W	A	LSL	LSL	W	A	W	LSL	A	W	LSL
Test Code 2094X17201	RSL	A	RSL	W	LSL	A	RSL	A	A	W	A	LSL	LSL	W	A	W	LSL	A	W	LSL
2552U17201	RSL	A	RSL	W	LSL	A	RSL	RSL	A	W	A	LSL	LSL	W	A	W	LSL	A	W	LSL
4428M17201	RSL	A	RSL	W	LSL	A	RSL	RSL	A	W	A	LSL	LSL	W	A	W	LSL	A	W	LSL

	Part 2	Part 3	Part 4				
	Pre-Sentencing	Checks	1	2	3	4	5

	Part 2	Part 3	Part 4				
	Pre-Sentencing	Checks	1	2	3	4	5
<i>Assigned Values</i>	JA, FC	CK1, CK2, CK3	EXC	ID	ID	EXC	EXC
Test Code 2094X17201	JA, FC	CK1, CK2, CK3	EXC	ID	ID	EXC	EXC
2552U17201	JA, FC	CK1, CK2, CK3	EXC	ID	ID	EXC	EXC
4428M17201	JA, FC	CK1, CK2, CK3	EXC	ID	ID	EXC	EXC

\*\*Arch=A, Right Slant Loop=RSL, Left Slant Loop=LSL, Whorl=W, Known Fingerprints of Josef Antonia=JA, Known Fingerprints of Franz Casimir=FC, Check #1=CK1, Check #2=CK2, Check #3=CK3, Identification=ID, Exclusion=EXC, Inconclusive=INC, None of the above=None\*\*

## Totals

Part 1																				
	1	2	3	4	5	6	7	8	9	10	11	12	13	14	15	16	17	18	19	20
<i>Assigned Values</i>	<i>RSL</i>	<i>A</i>	<i>RSL</i>	<i>W</i>	<i>LSL</i>	<i>A</i>	<i>RSL</i>	<i>RSL</i>	<i>A</i>	<i>W</i>	<i>A</i>	<i>LSL</i>	<i>LSL</i>	<i>W</i>	<i>A</i>	<i>W</i>	<i>LSL</i>	<i>A</i>	<i>W</i>	<i>LSL</i>
<i>Consistent Responses</i>	3	3	3	3	3	3	3	2	3	3	3	3	3	3	3	3	3	3	3	3
<i>Inconsistent Responses</i>	0	0	0	0	0	0	0	1	0	0	0	0	0	0	0	0	0	0	0	0
<i>Percentage of Consistent Responses</i>	100	100	100	100	100	100	100	67	100	100	100	100	100	100	100	100	100	100	100	100

	Part 2	Part 3	Part 4				
	Pre-Sentencing	Checks	1	2	3	4	5
<i>Assigned Values</i>	<i>JA, FC</i>	<i>CK1, CK2, CK3</i>	<i>EXC</i>	<i>ID</i>	<i>ID</i>	<i>EXC</i>	<i>EXC</i>
<i>Consistent Responses</i>	3	3	3	3	3	3	3
<i>Inconsistent Responses</i>	0	0	0	0	0	0	0
<i>Percentage of Consistent Responses</i>	100	100	100	100	100	100	100

## Participant's Additional Comments

Test ID	Comments
	NO COMMENTS PROVIDED

## Manufacturer's Additional Observations

There are no additional Observations.

**Authorized by:**   
Ron Smith, President  
*June 9, 2017*

**Issue Date:** *June 9, 2017*